

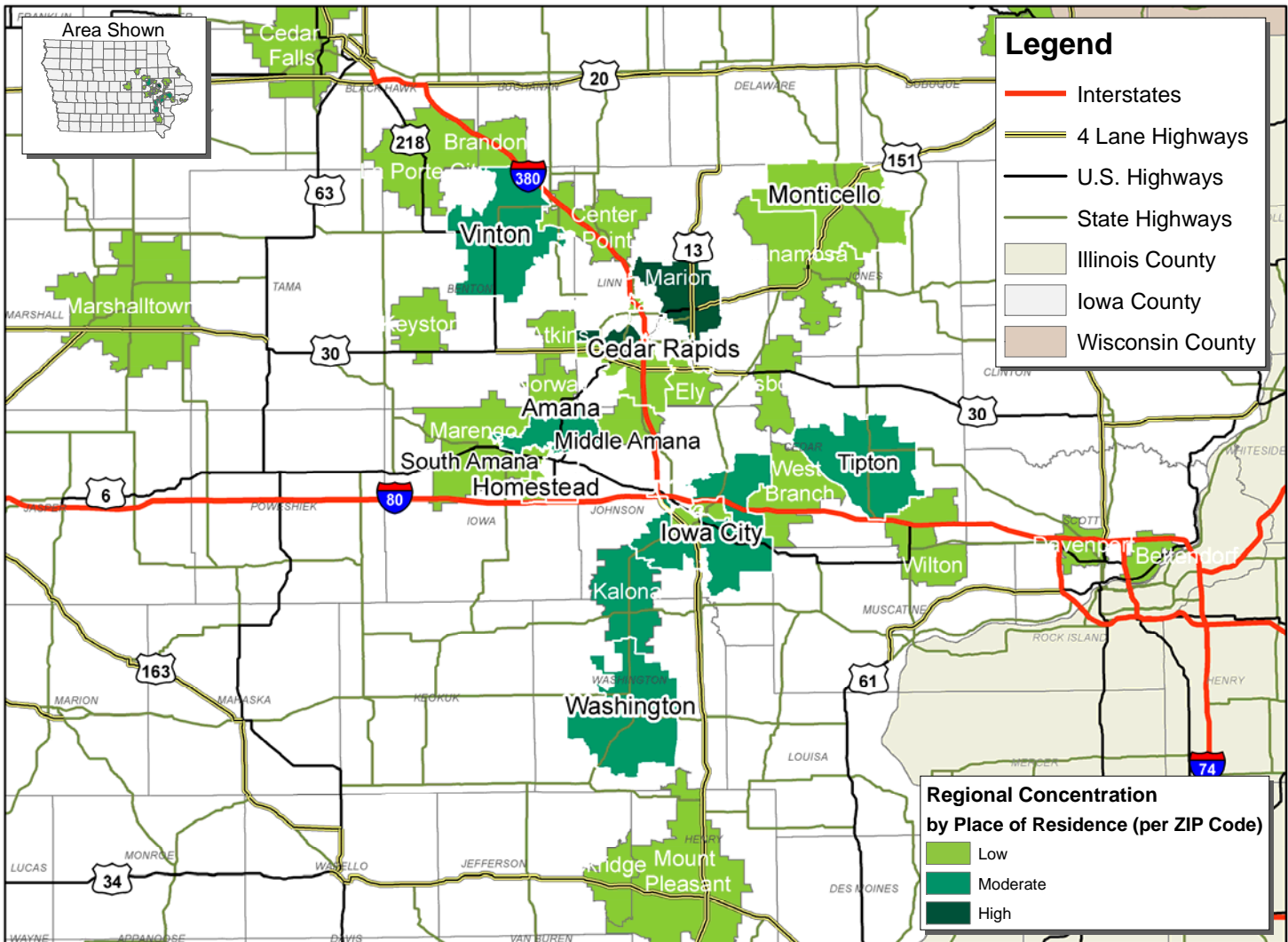
LABOR CHARACTERISTICS

INFORMATION TECHNOLOGY

CREATIVE CORRIDOR REGIONAL LABORSHED AREA



CONCENTRATION OF RESPONDENTS WITHIN THE LABORSHED AREA
WITH TRANSFERABLE EXPERIENCE/SKILLS BY PLACE OF RESIDENCE



Workers who have transferable experience/skills in the industry are currently commuting an average of 18 miles one way for work. Those who are likely to change/accept employment are willing to commute an average of 27 miles one way for the right employment opportunity.



FOR MORE INFORMATION REGARDING THE CREATIVE CORRIDOR REGIONAL LABORSHED, CONTACT:



Cedar Rapids Metro Alliance
501 First Street SE
Cedar Rapids, IA 52401
(319) 730-1425
Email: bcrowe@cedarrapids.org

Iowa City Area Development Group
316 E Court Street
Iowa City, IA 52240
(319) 354-3939
Email: dwilliamson@icadgroup.com
mnlte@icadgroup.com

iowascreativecorridor.com

LABOR CHARACTERISTICS



INFORMATION TECHNOLOGY

ESTIMATED AVAILABLE LABOR PER OCCUPATIONAL CATEGORY:

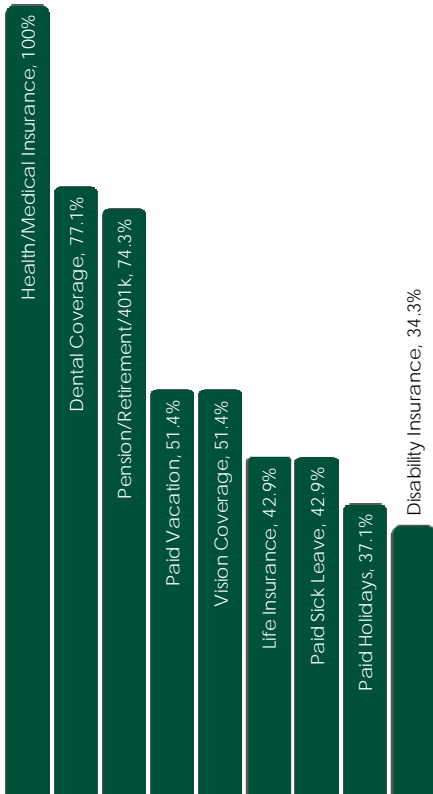
BUSINESS OPERATIONS:

- Managers - 381
- Computer Network Support Specialists - 378
- Computer Occupations - 5,711
- Computer Programmers - 1,142
- Computer Systems Analysts - 1,908
- Computer User Support Specialists - 1,900
- Database Administrators - 765
- Information Security Analysts - 384
- Network and Computer Systems Administrators - 377
- Software Developers, Applications - 2,284
- Software Developers, Systems Software - 1,523
- Web Developers - 761

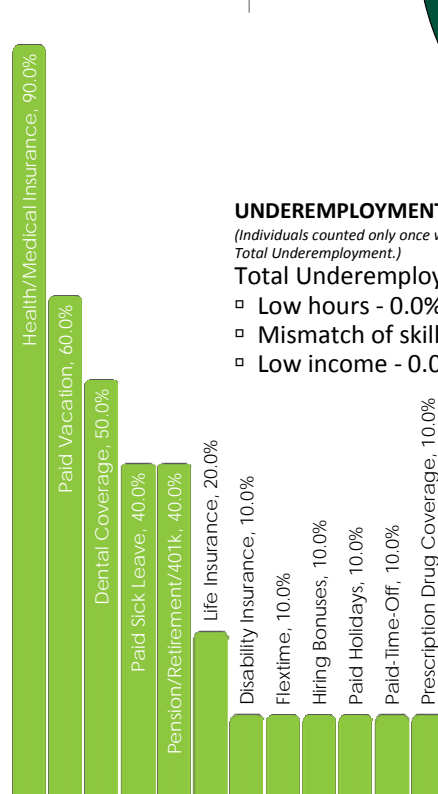
**AN ESTIMATED TOTAL OF
17,514 PEOPLE IN THE LABORSHED AREA**



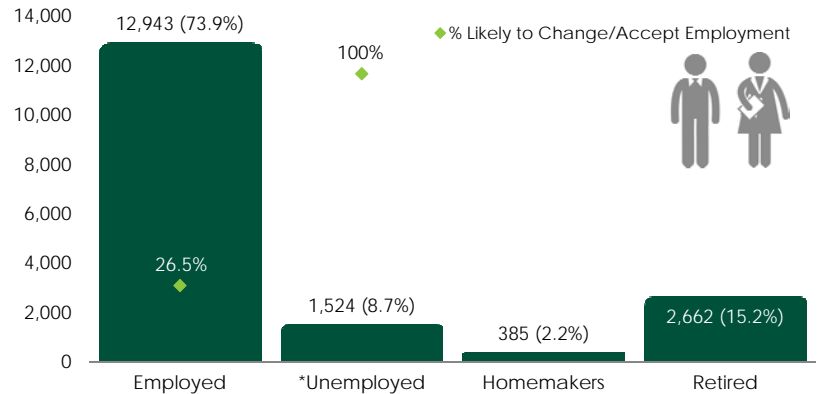
CURRENT BENEFITS:



DESIRED BENEFITS:



ESTIMATED TOTAL BY EMPLOYMENT STATUS (PERCENTAGE):



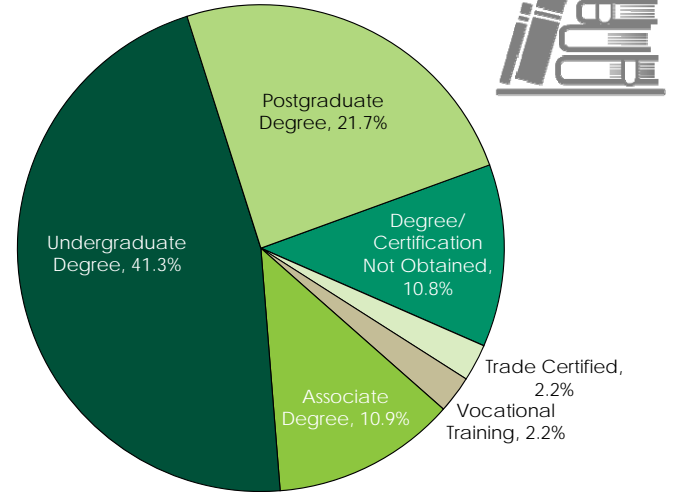
*Employment status is self-identified by the survey respondent. The unemployment percentage does not reflect the unemployment rate published by the U.S. Bureau of Labor Statistics, which applies a stricter definition.

EMPLOYMENT STATS:

- 81.0% paid an annual salary
- 95.6% are/were employed full-time
- 2.2% are/were employed part-time
- 2.2% are/were self-employed
- 8.8% hold two or more jobs
- Currently working an average of 44 hours/week

EDUCATIONAL LEVEL:

(89.1% HAVE AN EDUCATION BEYOND HIGH SCHOOL)



UNDEREMPLOYMENT:

(Individuals counted only once when estimating Total Underemployment.)

Total Underemployment - 2.2%

- Low hours - 0.0%
- Mismatch of skills - 2.2%
- Low income - 0.0%

TOP JOB SEARCH RESOURCES:

(For those seeking employment opportunities, by use.)

- Internet - 87.8%
 - www.linkedin.com
 - www.indeed.com
 - www.corridorcareers.com
 - www.iowajobs.org
- Networking through friends, family or acquaintances - 26.8%
- Local/Regional Newspapers - 12.2%
 - *The Gazette* - Cedar Rapids
- IowaWORKS Centers - 7.3%

WORKPLACE FLEXIBILITY:

(by percent of interest)

- Job teams - 93.3%
- Cross-training - 80.0%
- Job sharing - 46.7%
- Varied shifts - 33.3%
- Temporary work - 46.7%
- Seasonal work - 40.0%



LABOR CHARACTERISTICS - WAGES

INFORMATION TECHNOLOGY



OCCUPATION	OCCUPATIONAL CODE	MEAN WAGE	ENTRY WAGE	EXPERIENCED WAGE	MEDIAN WAGE	MEAN ANNUAL SALARY
Actuaries	15-2011	\$ 45.36	\$ 27.40	\$ 54.35	\$ 42.77	\$ 94,357
Computer and Information Systems Managers	11-3021	\$ 54.90	\$ 39.18	\$ 62.76	\$ 55.41	\$ 114,184
Computer Network Architects	15-1143	\$ 40.97	\$ 28.65	\$ 47.14	\$ 40.92	\$ 85,226
Computer Network Support Specialists	15-1152	\$ 25.40	\$ 18.26	\$ 28.97	\$ 23.96	\$ 52,836
Computer Occupations, All Other	15-1199	\$ 30.25	\$ 17.16	\$ 36.79	\$ 29.79	\$ 62,918
Computer Programmers	15-1131	\$ 31.37	\$ 21.81	\$ 36.15	\$ 31.33	\$ 65,253
Computer Systems Analysts	15-1121	\$ 36.67	\$ 24.55	\$ 42.72	\$ 34.93	\$ 76,264
Computer User Support Specialists	15-1151	\$ 20.50	\$ 14.21	\$ 23.65	\$ 20.26	\$ 42,640
Database Administrators	15-1141	\$ 32.73	\$ 21.32	\$ 38.43	\$ 31.93	\$ 68,069
Information Security Analysts	15-1122	\$ 37.23	\$ 26.72	\$ 42.49	\$ 36.77	\$ 77,448
Network and Computer Systems Administrators	15-1142	\$ 31.67	\$ 23.32	\$ 35.84	\$ 30.98	\$ 65,867
Operations Research Analysts	15-2031	\$ 36.06	\$ 25.67	\$ 41.25	\$ 35.98	\$ 75,006
Software Developers, Applications	15-1132	\$ 37.61	\$ 27.91	\$ 42.46	\$ 36.23	\$ 78,231
Software Developers, Systems Software	15-1133	\$ 40.86	\$ 31.79	\$ 45.40	\$ 39.86	\$ 84,996
Web Developers	15-1134	\$ 28.23	\$ 16.68	\$ 34.01	\$ 27.31	\$ 58,719

The 2015 Iowa Wage data for the Creative Corridor Regional Laborshed area was produced by the Labor Force & Occupational Analysis Bureau to provide communities local information on wages by occupation. The source of the wage and employment data is based on the May 2014 OES estimates. Additional occupational wage and employment data can be found at <https://www.iowaworkforcedevelopment.gov/occupational-employment-and-wages>.